



THINK BEFORE YOU THROW.

Walden Cluster Recycling Guidelines

Enclosed are specific guidelines showing acceptable and unacceptable items for curbside recycling. Recycling is currently scheduled each Friday. Recycling must be placed in a plastic recycling bin.

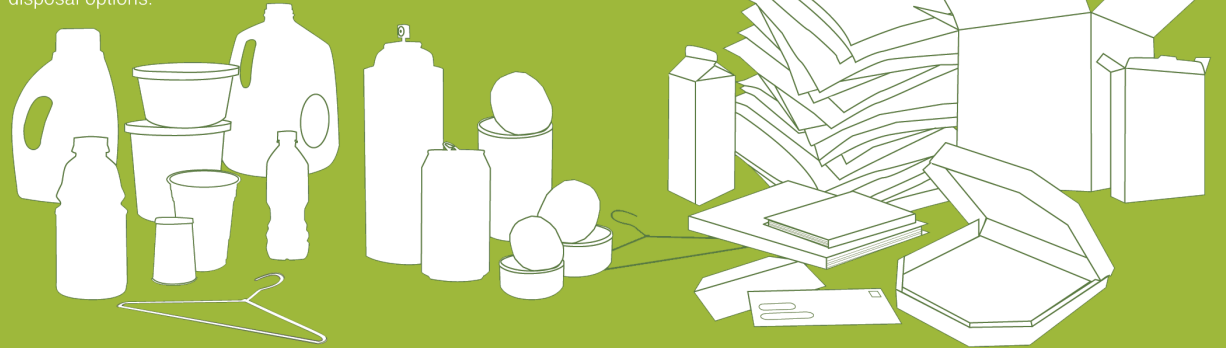
If you do not have a recycling bin, please request one from the Board via email at waldencluster@gmail.com. Include your name and street number, and one will be provided to you.

REDUCE ★ REUSE ★ RECYCLE



YES

Place **ALL** items in your recycling bin together. Some items may need a quick rinse, to avoid contamination in the recycling process. For items not listed, please contact your landfill for recycling and disposal options.



PLASTICS

ALL plastics labeled #1-7, milk jugs, rigid plastics, plastic coat hangers, wide-mouth plastics



METALS

Aluminum cans, steel cans like soup cans, aluminum foil and aluminum foil trays (rinsed), empty aerosol cans, metal coat hangers

GLASS

ALL glass bottles and jars are acceptable in your bin

PAPERS

Mixed paper, office paper, junk mail, magazines, catalogs, phone books, paperback and hardback books, paperboard used to make food packaging like cereal boxes, juice cartons and boxes, newspapers and ALL inserts, cardboard boxes, pizza boxes (without grease)



NO

The following items **DO NOT** belong in your recycling bin.

- no heavy metal pots and pans (bring to a scrap yard)
- no food-covered paper plates & napkins
- no glassware/heat-resistant glass
- no Styrofoam products
- no light bulbs
- no ceramics
- no batteries
- no clothing
- no tires

